

# Bulb Catalogue 2017



[Led-lights.ie](http://Led-lights.ie)

Email: [L.E.D.lightechltd@gmail.com](mailto:L.E.D.lightechltd@gmail.com)

Phone: 00 353 (0)45 529020





*Light is like a diamond. It needs a perfect setting*

LED Lightech Ltd is a fully owned Irish company based in Monasterevin Co Kildare. For over 35 years we have been installing beautiful lighting for many different projects from simple lamp replacements to DMX and DALI controlled lighting systems. Our skilled personnel work closely with our customers from concept stage to project completion. We work with designers, specifiers and contractors in creating effective and attractive lighting concepts.

The products we sell are of the highest standard and all are fully certified to meet regulations and standards such as TÜV, RoHS, CE, UL GS. To achieve the highest quality and reliability we use only recognised quality components such as CREE, Bridgelux, Osram, Philips and Epistar chips, and Tridonic, Philips, Osram, Samsung, Meanwell and other major quality leading brands of drivers. All our products have between 25000 and up to 100000 hours working life and are fully guaranteed for up to 5 years.

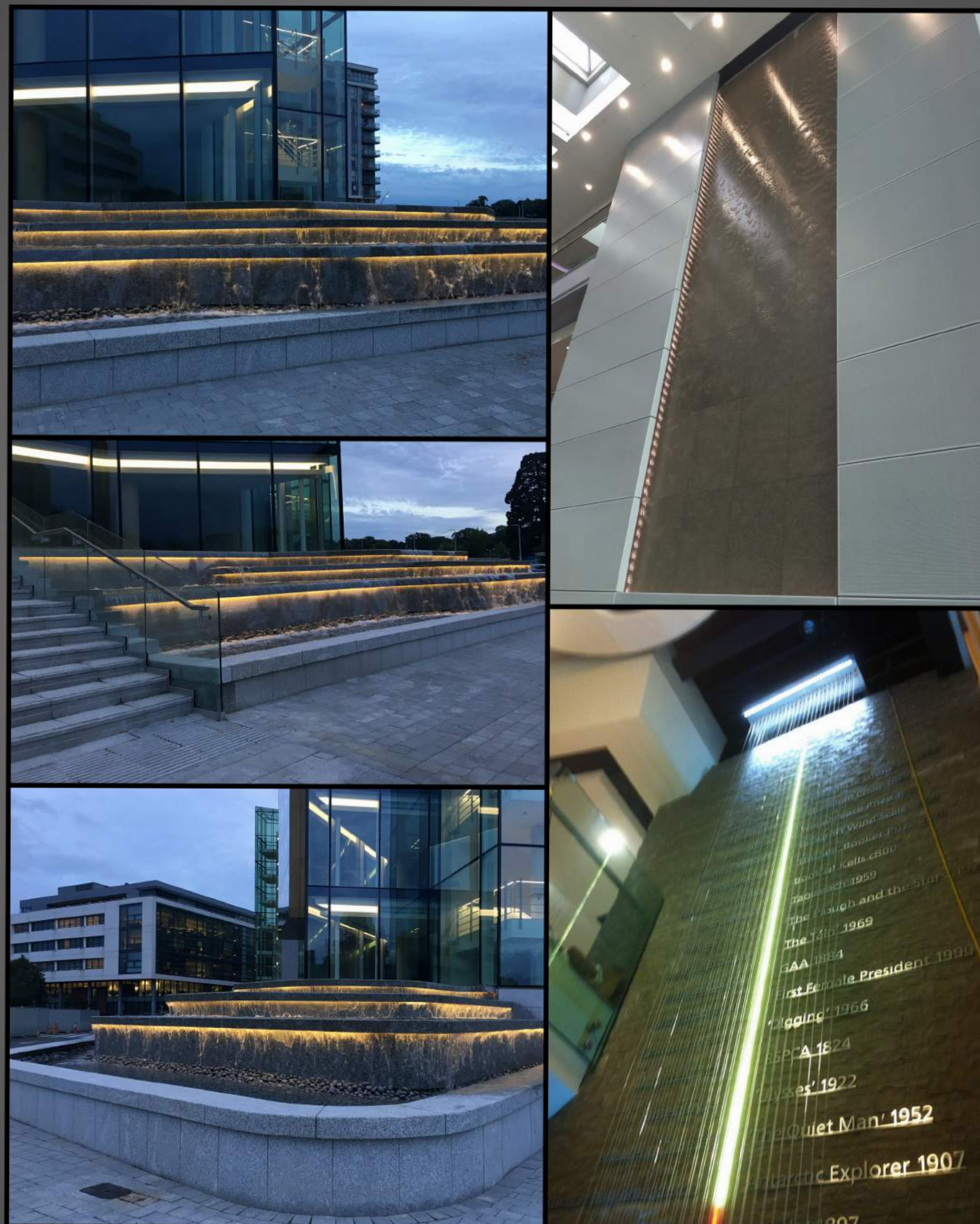
We cater for all requirements with our extensive range of LED products from our standard and designer range which you will find in our catalogue attached or visit our web site [WWW.LED-LIGHTS.IE](http://WWW.LED-LIGHTS.IE). We offer once off special fittings and lights to your requirements. By working closely with major lighting suppliers and designers in Europe everything is possible from unique designs, product quality, on time delivery and price competitive.

Grants up to 30% of outlay on retrofit and new builds by installing LED are available subject to a certain criteria, we offer a free service assisting you in obtaining these grants and helping you to permanently reduce your electricity costs, call us for more information.

For your reference, we have attached a short list of some completed projects which we trust you will find of interest. We welcome your enquiries and look forward to working with you to Brighten up the world.

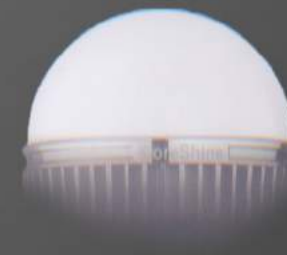
Albert Crowley,  
Managing Director  
L.E.D.LightechLtd

PH 00 353 (0)45 529020  
FAX 00 353 (0)45 529028  
[WWW.LED-LIGHTS.IE](http://WWW.LED-LIGHTS.IE)

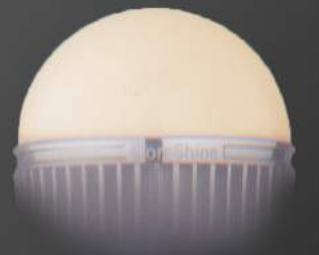




# G60 LED Bulb



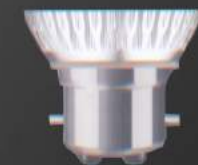
Day Light



Warm Light



E27 Lampbase



B22 Lampbase

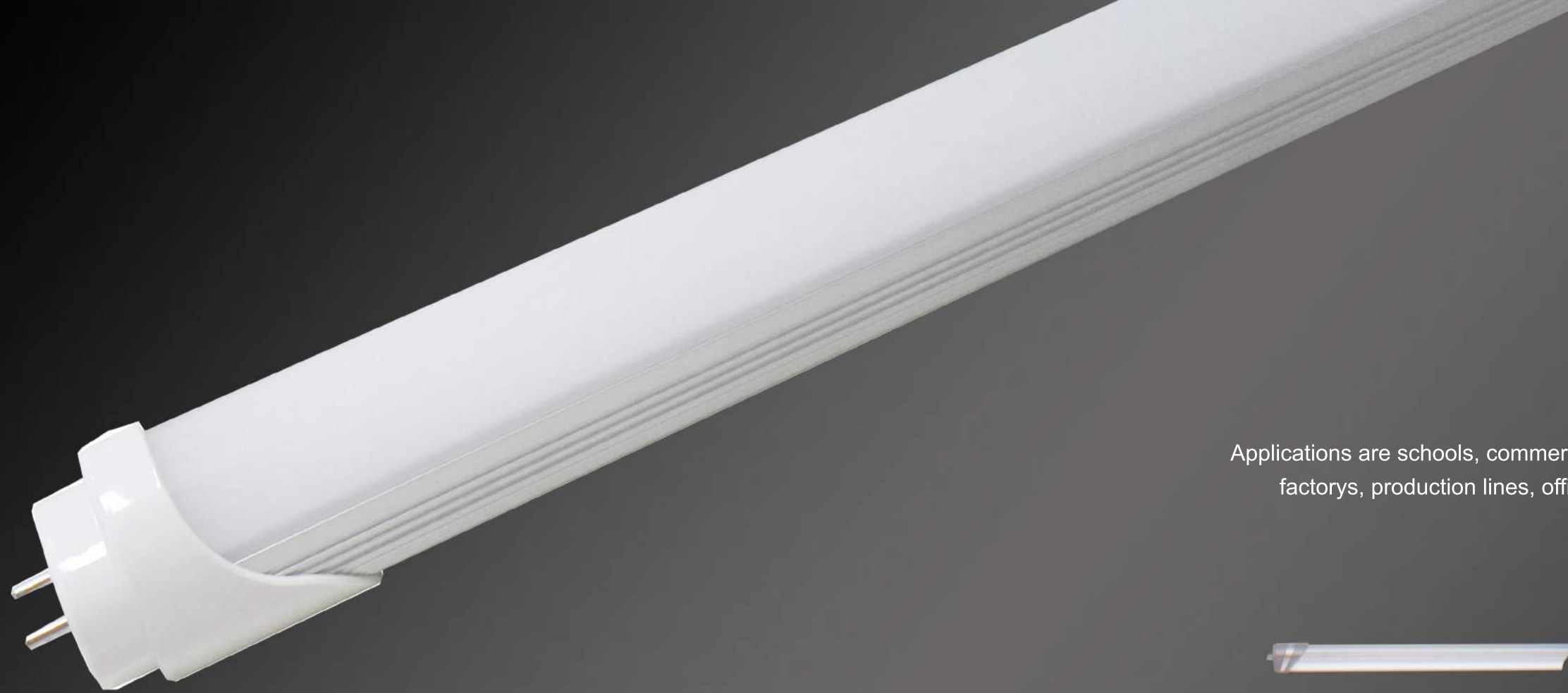


GU10 Lampbase

All bulbs are equipped with standard bases so you dont have to change your luminaires. Just take out the old lamps and insert the new one



Ledlightech dimmable bulbs are compatible with most commercially available LED dimmers and have a dimming range of 0% - 100% .



Applications are schools, commercial buildings, hotels, restaurants, factorys, production lines, offices, show rooms and so on.



Day Light

Warm Light

# ***T8 LED Tube***

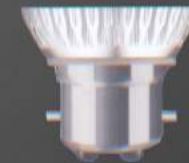
# LED PAR20



They can be widely used for decoration fields such as supermarkets, hotels, bars, meeting rooms, exhibition halls, show windows, nightclubs and house decoration.



E27 Lampbase



B22 Lampbase



GU10 Lampbase

All bulbs are equipped with standard bases so you don't have to change your luminaires. Just take out the old lamp and insert the new one



Ledlightech Ltd LED dimmable PAR20 are compatible with most commercially available LED dimmers and have a dimming range of 0% - 100% .

# LED Spotlight



GU5.3 Lampbase



E27 Lampbase



E14 Lampbase



GU10 Lampbase

All bulbs are equipped with standard bases so you dont have to change your luminaires. Just take out the old lamp and insert the new one.

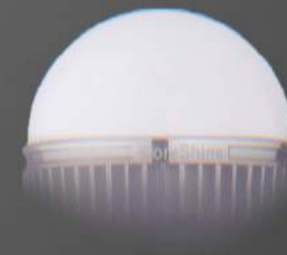




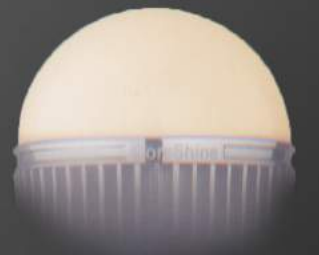
# G70 LED Bulb



They are used for general lighting in hotels and household decoration, especially for galleries and courtyards. They are also suitable for window displays in fashion shops, fashion shows and PC shops.



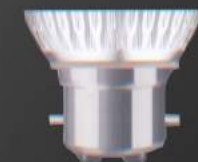
Day Light



Warm Light



E27 Lampbase



B22 Lampbase



GU10 Lampbase

Equipped with standard bases so you dont have to change your luminaires.  
Just take out the old lamp and insert the new one



Ledlightech dimmable bulbs are compatible with most commercially available LED dimmers and have a dimming range of 0% - 100% .

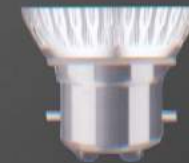
# LED PAR30



They can be widely used for decoration fields such as supermarkets, hotels, bars, meeting rooms, exhibition halls, show windows, nightclubs and house decoration.



E27 Lampbase



B22 Lampbase



GU10 Lampbase

Equipped with standard bases so you dont have to change your luminaires.  
Just take out the old lamp and insert the new one



Ledlightech dimmable PAR30 are compatible with most commercially available LED dimmers and have a dimming range of 0% - 100% .



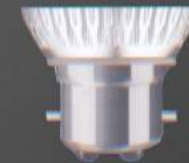
# LED PAR38



They can be widely used for decoration in fields such as supermarkets, hotels, bars, meeting rooms, exhibition halls, show windows, nightclubs and house decoration.



E27 Lampbase



B22 Lampbase



GU10 Lampbase

Equipped with standard bases so you dont have to change your luminaires.  
Just take out the old lamp and insert the new one.



Ledlightech dimmable PAR38 are compatible with most commercially available LED dimmers and have a dimming range of 0% - 100% .

# LED Candle Light



Ledlightech candle lights can be used widely for hotel and household decoration, especially in bars, hotels, art venues, shop windows and other places.



Day Light



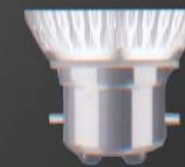
Warm Light



E14 Lampbase



E27 Lampbase



B22 Lampbase



GU10 Lampbase

Equipped with standard bases so you dont have to change your luminaires.  
Just take out the old lamp and insert the new one.



Ledlightech dimmable PAR38 are compatible with most commercially available LED dimmers and have a dimming range of 0% - 100% .



[Led-lights.ie](http://Led-lights.ie)

Email: [L.E.D.lighttechltd@gmail.com](mailto:L.E.D.lighttechltd@gmail.com)

Phone: 00 353 (0)45 529020