



Linear
Lighting &
Accessories
Catalogue
2017



Led-lights.ie

Email: L.E.D.lighttechltd@gmail.com

Phone: 00 353 (0)45 529020



Light is like a diamond. It needs a perfect setting

LED Lightech Ltd is a fully owned Irish company based in Monasterevin Co Kildare. For over 35 years we have been installing beautiful lighting for many different projects from simple lamp replacements to DMX and DALI controlled lighting systems. Our skilled personnel work closely with our customers from concept stage to project completion. We work with designers, specifiers and contractors in creating effective and attractive lighting concepts.

The products we sell are of the highest standard and all are fully certified to meet regulations and standards such as TÜV, RoHS, CE, UL GS. To achieve the highest quality and reliability we use only recognised quality components such as CREE, Bridgelux, Osram, Philips and Epistar chips, and Tridonic, Philips, Osram, Samsung, Meanwell and other major quality leading brands of drivers. All our products have between 25000 and up to 100000 hours working life and are fully guaranteed for up to 5 years.

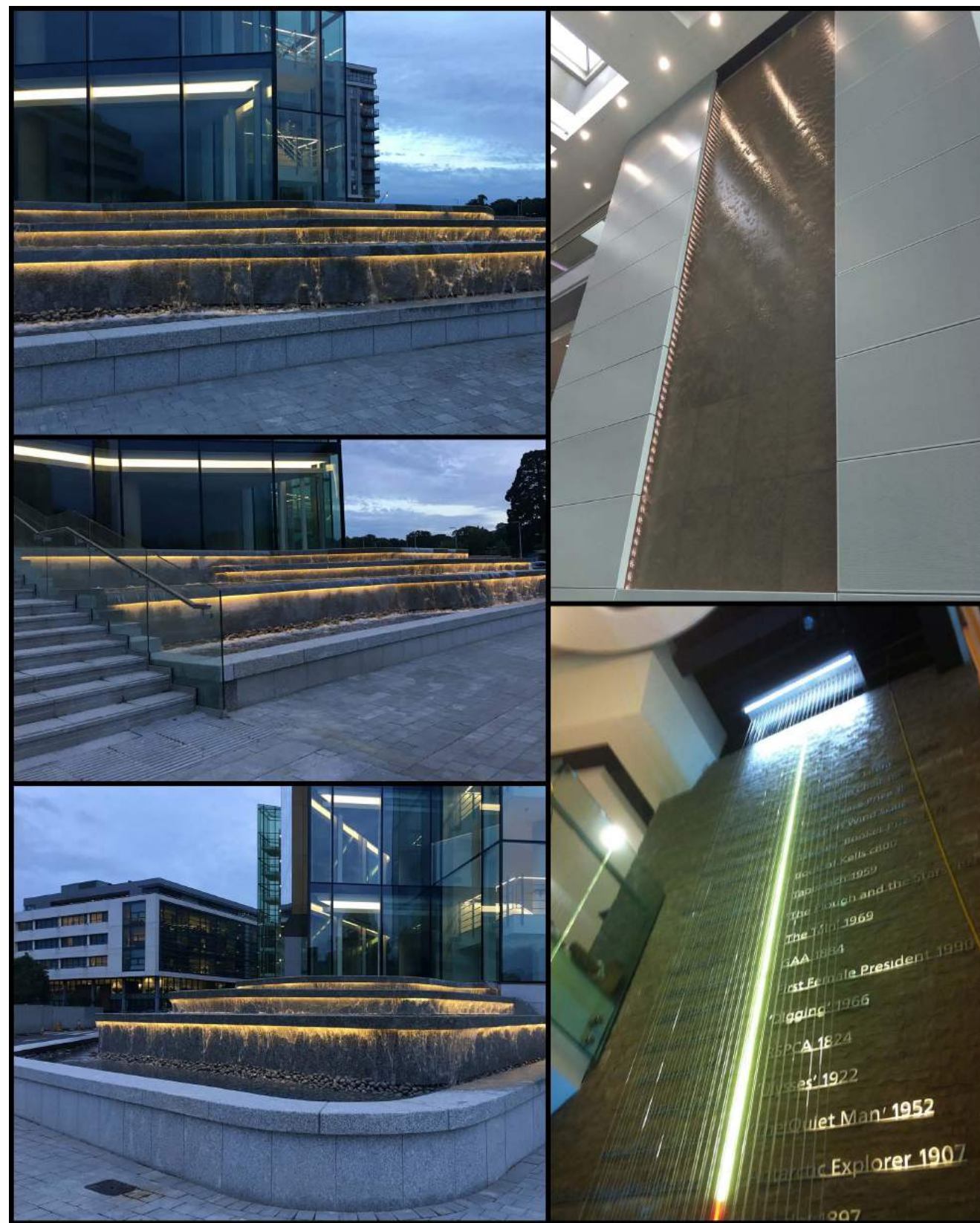
We cater for all requirements with our extensive range of LED products from our standard and designer range which you will find in our catalogue attached or visit our web site WWW.LED-LIGHTS.IE. We offer once off special fittings and lights to your requirements. By working closely with major lighting suppliers and designers in Europe everything is possible from unique designs, product quality, on time delivery and price competitive.

Grants up to 30% of outlay on retrofit and new builds by installing LED are available subject to a certain criteria, we offer a free service assisting you in obtaining these grants and helping you to permanently reduce your electricity costs, call us for more information.

For your reference, we have attached a short list of some completed projects which we trust you will find of interest. We welcome your enquiries and look forward to working with you to Brighten up the world.

Albert Crowley,
Managing Director
L.E.D.LightechLtd

PH 00 353 (0)45 529020
FAX 00 353 (0)45 529028
WWW.LED-LIGHTS.IE



Ledlightech led linear trunking system is an energy-efficient low maintenance alternative to traditional linear fluorescents in a variety of industrial, commercial and light assembly applications. It is the optimal solution for conventional lighting systems and also excellent for new installations due to its low installation cost - everything in one fitting. It saves both time and cost when updating lighting systems. Ledlightech LED linear trunking system is also very good in terms of its low maintenance cost.



Benifits:

- Cost effective light-line solutions for industrial, commercial and other applications.
- High quality light with high lumen output to meet different requirements.
- Easy to order and install, requiring less time and reducing packaging waste.
- Flexible solutions.

Application:

- Commercial
- Warehouse
- Industrial
- Other indoor lighting

Trunking Rail:

- 3-phase pre selection via moving of contact pin prior to installation on rail
- Trunking rail as standard with 5, 7 or 11-core through-wiring with 2.5mm cable cross section
- The maximum current is 16A, allowing 44 tubes of 150cm 80W on one serial
- Separate power supplies, dimming or emergency supply can be integrated
- Electrical feed possible in central or end area of a trunking rail arrangement via special trunking rail element
- Trunking rail modules with pre assembled connector elements.
- Wide distances between suspension points to 3mm with self-supporting connector elements
- Simple mounting of trucking rail element with pre-assembled connectors with integral plug-in system
- Flexible electrical feed-in and feed-out points
- Terminal feed-in connector for easy connection with electricity



Optics:

A wide range of optics from sharp to wide distribution, as well as asymmetric.

- Sharp distribution, 25 degree
- Narrow distribution, 60 degree
- Wide distribution, 90 degree
- Flat distribution, 120/140 degree
- Asymmetric distribution
- Double asymmetric distribution



Emergency Lighting Function:

It can work on normal mains and automatically switch to emergency supply in the event of a power failure to provide sufficient light and ensure safe evacuation in emergency situations.

A wide variety of self controlled batteries are available, as well as two independent emergency lighting circuits in the trunking.

Dimming & Multi-Sensor Systems:

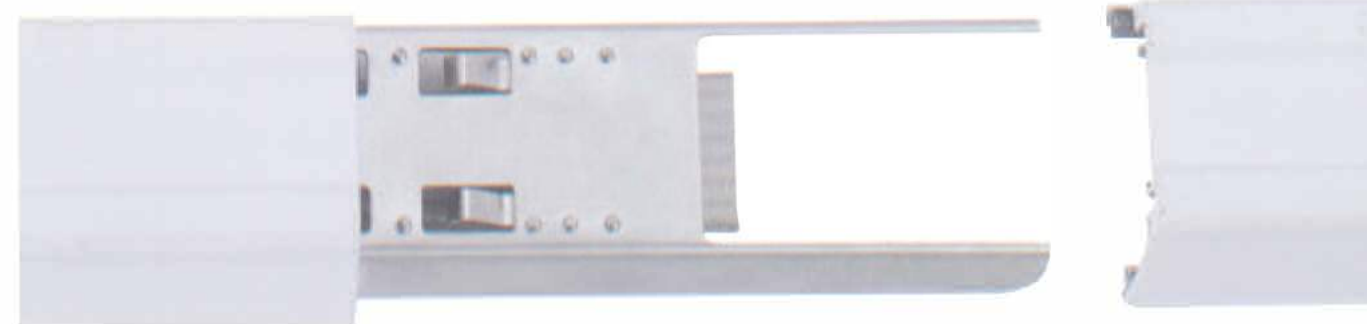
- 3 different dimming systems, DALI, 1-10V and DIM switch.
- It does not only have an integrated microwave sensor for movement detection, but also a daylight sensor.

Node Connector:

- X, L and T standard module Node connectors.
- Node connector can be electrical feed-in.
- Each Node connector has a diverse electrical feed-in and feed-out module.

Installation:

- Pendant chain installation
- Pendant cord installation
- Pendant rod installation
- Surface mounted



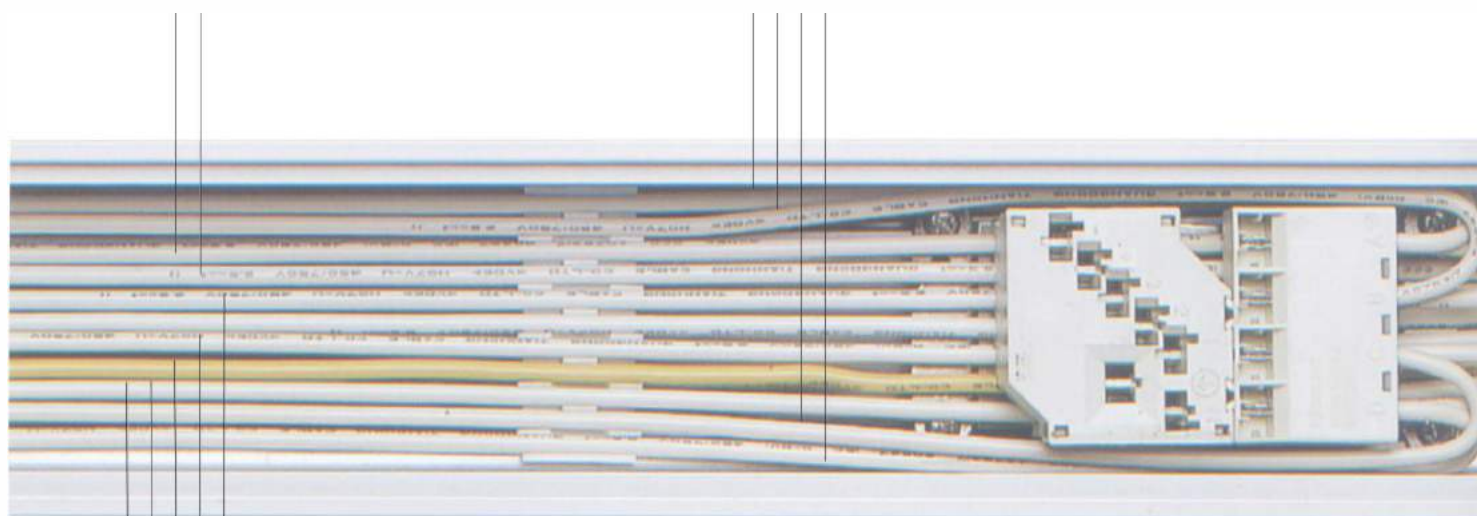
Trunking Rail

The flexible trunking system for challenging lighting demands in all applications. With fully compatible modular kit, it adapts individually to complex lighting tasks. It has an 11-pole current conducting section built into its trunking. This means that the system comes equipped to meet tomorrow's needs. All functions such as power supply, lighting control and connection to emergency lighting are seamlessly integrated into this multi-functional trunking. Luminaires can be positioned flexibly and the system can be adapted to suit structural alterations at any time. The trunking rail is simply a matter of replacing or adding lighting modules, light sources or optics as required.

Wiring information:

2 control lines with DALI
control signal for brightness
control (2 x 2.5mm)

4 poles for two independent
emergency lighting circuits
(4 x 2.5mm)



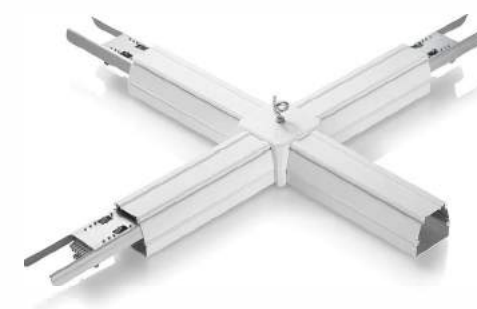
5 connections for power supply (5 x 2.5 mm)

- Load sharing allows for triple continuous row length
- Separate switchable circuits for extremely easy light control in triple circuit.

Surface available in white,
black or silver

Node Connector:

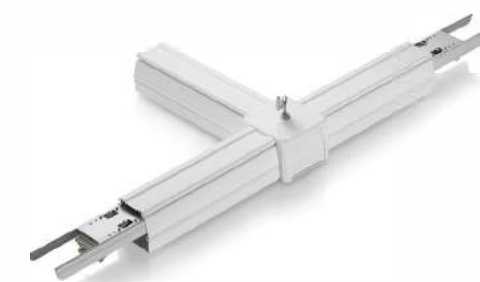
All system components can be combined without tools. X, T and L connectors expand the systems application range.



X Node Connector



L Node Connector



T Node Connector

Each node connector has a diverse electrical feed-in and feed-out module. The node connector is not only to connect the cross trunking, but also to connect the wire's inside the trunking, and the node connector itself could even be the electricity feed-in point.

Luminaire

A continuous row LED lighting system can be created by a trunking unit and LED luminaires. It appears as a consistent continuous row system, without any visual interruption or different reflectors. The luminaire and trunking are perfectly matched to each other.



All possible light distribution patterns can be created with various optical components.

Optics



The high light efficiency of 150 LM per watt helps reduce energy consumption and additional costs. The LEDs keeps enough margin to make sure the luminaire efficiency reaches the best possible level .



LEDs Feature



Length Option

Different Lengths with various wattages available,

- 570mm 16W / 26W / 32W
- 1416mm 32W / 40W / 65W / 80W
- 2832mm 65W / 80W / 120W
- 4248mm 96W / 120W

With a color rendering index of $Ra > 80$, colour temperatures of 3000 K, 4000 K, 5000 K and 6000 K, and low UGR, it can meet environmental requirements and comply with funding guidelines for energy-efficient buildings and lighting solutions.

For special applications where high accuracy of colour is required, such as in museums, jewelry stores, printing factory's and so on, CR195 linear series is highly recommended.

Beam Angle



Different diffusers for different distribution



Sharp



Narrow



Wide



Flat



Asymmetric
(left or right)



Double asymmetric

Multi-Sensor System



Multi-sensor systems combine energy saving with high convenience for the user. Energy can be saved by integrating motion and daylight sensors.

Installation



A maximum suspension span of 3m ensures quick and easy installation with fewer suspension points.

Emergency Lighting



Emergency lighting systems ensures optimum lighting and orientation, even in the event of a power failure. General lighting and emergency lighting are combined in a single highly functional, integrated lighting solution.

A wide variety of emergency modes are available,

- Central battery systems / Generator EL1 EN1 & EL2 EN2

- Self contained battery

Under this mode, the luminaries could be 6W or 12W, working for 1.5 hours or 3 hours (depending on the demand selected in advance)

The Ni-MH battery that is used has a high temperature resistance which makes sure it has a longer life span.

A small spotlight is available on the 600mm module as an extra version, while also featuring a rotating light head for emergency use at 5W.



Chain



Cord



Rod



Surface Mounted

Dali and Dimming System

Efficient tools for lighting are the basis for solutions with low operating overheads and high quality of light. Supplemented with suitable light control, saving potential can be further increased. The right type of light management depends decisively on the specific building conditions of the area. With a wide variety of dimming light control systems with the suitable sensor technology, and thanks to open, non-proprietary standards, such solutions can be simply integrated into common building management systems.



Dimming systems are suitable for complex applications like controlling rooms. For daylight-dependent controls and dynamic light controls. There are 3 types of dimming available,

- DALI dimming
- 1-10V dimming
- DIMswitch

Track Spot Light



It is specially designed and perfectly used for pinpoint accent lighting. Special focus light to attract the customer's attention to the objects on display. Optimized for efficient accent lighting in supermarkets, museums, exhibitions where merchandise, billboards, paintings, sculptures require accent lighting.



Led-lights.ie

Email: L.E.D.lighttechltd@gmail.com

Phone: 00 353 (0)45 529020