



Wall & Ceiling Lamps Catalogue 2017



Led-lights.ie

Email: L.E.D.lighttechLtd@gmail.com

Phone: 00 353 (0)45 529020



Light is like a diamond. It needs a perfect setting

LED Lighttech Ltd is a fully owned Irish company based in Monasterevin Co Kildare. For over 35 years we have been installing beautiful lighting for many different projects from simple lamp replacements to DMX and DALI controlled lighting systems. Our skilled personnel work closely with our customers from concept stage to project completion. We work with designers, specifiers and contractors in creating effective and attractive lighting concepts.

The products we sell are of the highest standard and all are fully certified to meet regulations and standards such as TÜV, RoHS, CE, UL GS. To achieve the highest quality and reliability we use only recognised quality components such as CREE, Bridgelux, Osram, Philips and Epistar chips, and Tridonic, Philips, Osram, Samsung, Meanwell and other major quality leading brands of drivers. All our products have between 25000 and up to 100000 hours working life and are fully guaranteed for up to 5 years.

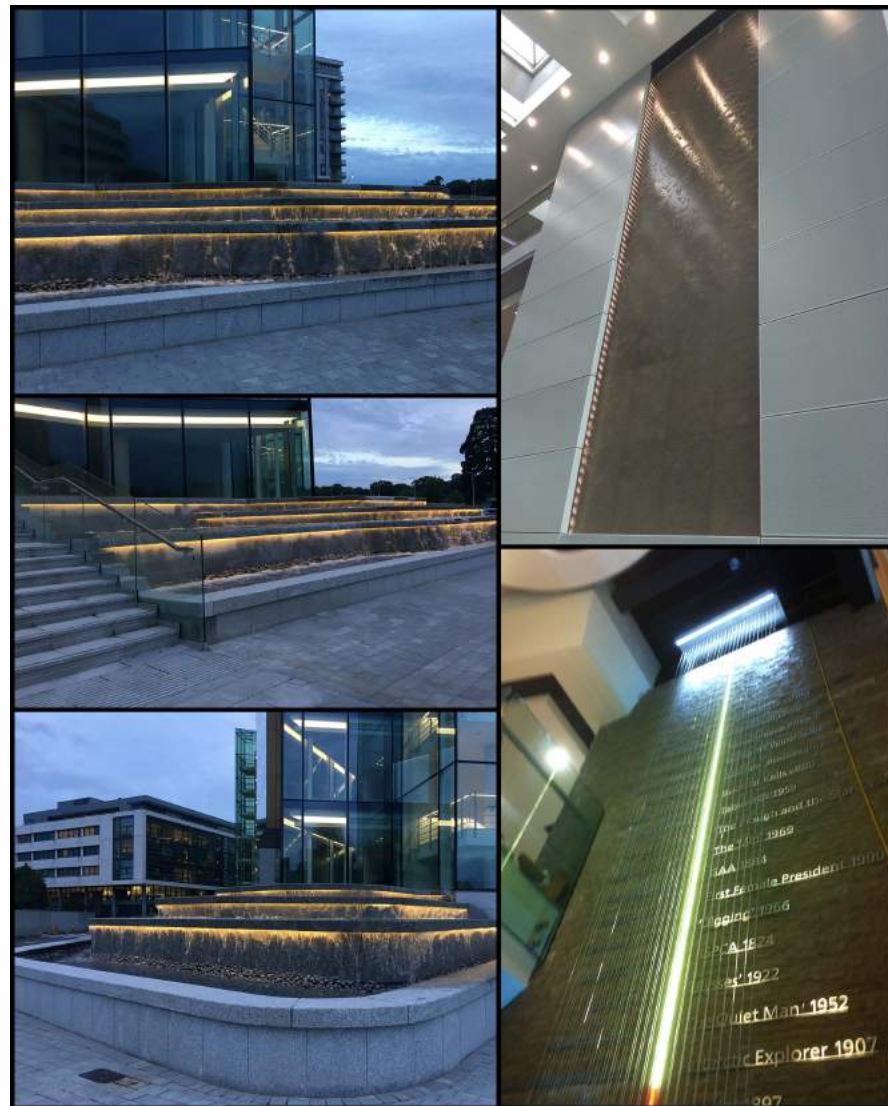
We cater for all requirements with our extensive range of LED products from our standard and designer range which you will find in our catalogue attached or visit our web site WWW.LED-LIGHTS.IE. We offer once off special fittings and lights to your requirements. By working closely with major lighting suppliers and designers in Europe everything is possible from unique designs, product quality, on time delivery and price competitive.

Grants up to 30% of outlay on retrofit and new builds by installing LED are available subject to a certain criteria, we offer a free service assisting you in obtaining these grants and helping you to permanently reduce your electricity costs, call us for more information.

For your reference, we have attached a short list of some completed projects which we trust you will find of interest. We welcome your enquiries and look forward to working with you to Brighten up the world.

Albert Crowley,
Managing Director
L.E.D.LighttechLtd

PH 00 353 (0)45 529020
FAX 00 353 (0)45 529028
WWW.LED-LIGHTS.IE





□ : CW (5000-7000K)
 □ : NW (3500-5000K)
 □ : WW (2700-3500K)

Part No.	Voltage (V)	Power (W)	Beam Angle	LED Qty	Luminous Flux (Lm)	RA	Average Life (Hr)	Size (MM)	Material	Packing (pcs/kg/cbm)
LED-G4-2W	AC/DC 12V	2.0W	180°	1 PC COB	140LM	Ra>80	40,000	14*43mm	Ceramic	500/6.5/0.019



□ : CW (5000-7000K)
 □ : NW (3500-5000K)
 □ : WW (2700-3500K)

Part No.	Voltage (V)	Power (W)	Beam Angle	LED Qty	Luminous Flux (Lm)	RA	Average Life (Hr)	Size (MM)	Material	Packing (pcs/kg/cbm)
LED-G4-1.5W	AC/DC 12V	1.5W	180°	24x3014SMD	110LM	Ra>80	40,000	9.5*34.5 mm	Silicon	1000/5.5/0.018



□ : CW (5000-7000K)
 □ : NW (3500-5000K)
 □ : WW (2700-3500K)

Part No.	Voltage (V)	Power (W)	Beam Angle	LED Qty	Luminous Flux (Lm)	RA	Average Life (Hr)	Size (MM)	Material	Packing (pcs/kg/cbm)
LED-G4-2.5W	AC/DC 12V	2.5W	180°	48x3014SMD	160LM	Ra>80	40,000	12*37mm	Silicon	500/5.5/0.019



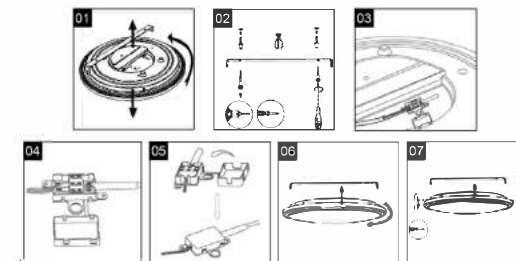
□ : CW (5000-7000K)
 □ : NW (3500-5000K)
 □ : WW (2700-3500K)

Part No.	Voltage (V)	Power (W)	Beam Angle	LED Qty	Luminous Flux (Lm)	RA	Average Life (Hr)	Size (MM)	Material	Packing (pcs/kg/cbm)
LED-G4-3W	AC/DC 12V	3.0W	180°	57x3014SMD	200LM	Ra>80	40,000	15*43mm	Silicon	500/6.5/0.019



Dimmable Available

□ : CW (5000-7000K)
 □ : NW (3500-5000K)
 □ : WW (2700-3500K)



Part No.	Power (W)	Voltage	LED Qty	Luminous Flux (Lm)	Size (MM)	Beam Angle	CRI	IP Grade	Average Life (hr)	Material	Packing (pcs/kg/cbm)
LED-CE9016-14W	14W	AC100-265V	80x2835SMD	1000±10%	D290xH50	120°	Ra>80	IP 20	40,000	Metal base+ PMMA Cover	10/9/0.056
LED-CE9016-20W	20W		120x2835SMD	1400±10%	D350xH50						10/12/0.088
LED-CE9016-28W	28W		156x2835SMD	2000±10%	D380xH50						10/15/0.101



Dimmable Available



Waterproof

IP 65



□ : CW (5000-7000K)
 □ : NW (3500-5000K)
 □ : WW (2700-3500K)

Part No.	Power (W)	Voltage	LED Qty	Luminous Flux (Lm)	Size (MM)	Beam Angle	CRI	IP Grade	Average Life (hr)	Material	Packing (pcs/kg/cbm)
LED-CE9019-20W-A	20W	AC100-265V	150x2835SMD	1600±10%	D290xH50	120°	Ra>80	IP 65	40,000	Die cast aluminium base+ PC Cover	10/15/0.056



LED-CE9011-12W



LED-CE9012-12W

- : CW (5000-7000K)
- : NW (3500-5000K)
- : WW (2700-3500K)



Part No.	Power (W)	Voltage	LED Qty	Luminous Flux (Lm)	Size (MM)	Beam Angle	CRI	IP Grade	Average Life (hr)	Material	Packing (pcs/kg/cbm)
LED-CE9011-12W	12W	AC100-265V	100x2835SMD	1000±10%	D230xH50	120°	Ra>80	IP 44	40,000	ABS Base+ PC Cover	10/8/0.035
LED-CE9012-12W	12W		100x2835SMD	1000±10%	220x220x50						



- : CW (5000-7000K)
- : NW (3500-5000K)
- : WW (2700-3500K)



Dimmable Available



Part No.	Power (W)	Voltage	LED Qty	Luminous Flux (Lm)	Size (MM)	Beam Angle	CRI	IP Grade	Average Life (hr)	Material	Packing (pcs/kg/cbm)
LED-CE9020-20W	20W	AC100-265V	225x2835SMD	1600±10%	D250xH40	120°	Ra>80	IP 54	40,000	Die cast aluminium base+ PC Cover	10/10/0.034
LED-CE9020-30W	30W		225x2835SMD	2400±10%	D250xH40						



Backlit Colours:Blue/Pink/Green/Orange



- : CW (5000-7000K)
- : NW (3500-5000K)
- : WW (2700-3500K)

Emergency

Emergency response time:3H
Emergency power:2W/4W



Microwave Sensor



Part No.	Power (W)	Voltage	LED Qty	Luminous Flux (Lm)	Size (MM)	Beam Angle	CRI	IP Grade	Average Life (hr)	Material	Packing (pcs/kg/cbm)
LED-CE103-10W	10W	AC100-265V	100x2835SMD	800±10%	D270xH100	120°	Ra>80	IP 54	40,000	PC Base+ PC Cover	12/14/0.101
LED-CE103-14W	14W		144x2835SMD	1100±10%	D270xH100						
LED-CE103A-18W	18W		180x2835SMD	1400±10%	D362xH118						10/16/0.179
LED-CE103A-30W	30W		288x2835SMD	2400±10%	D362xH118						



- : CW (5000-7000K)
- : NW (3500-5000K)
- : WW (2700-3500K)



Emergency

Emergency response time:3H
Emergency power:2W/4W



Microwave Sensor

Part No.	Power (W)	Voltage	LED Qty	Luminous Flux (Lm)	Size (MM)	Beam Angle	CRI	IP Grade	Average Life (hr)	Material	Packing (pcs/kg/cbm)
LED-CE9009-10W	10W	AC100-265V	100x2835SMD	850±10%	D271xH92	120°	Ra>80	IP 54	40,000	PC Base+PC Cover	10/10.5/0.080
LED-CE9010-18W	18W		180x2835SMD	1400±10%	D325xH100						



LED-CE9017-18W

- : CW (5000-7000K)
- : NW (3500-5000K)
- : WW (2700-3500K)



LED-CE9018-18W

Part No.	Power (W)	Voltage	LED Qty	Luminous Flux (Lm)	Size (MM)	Beam Angle	CRI	IP Grade	Average Life (hr)	Material	Packing (pcs/kg/cbm)
LED-CE9017-18W	18W	AC100-265V	180x2835SMD	1400±10%	D285xH86	120°	Ra>80	IP 54	40,000	PC Base+PC Cover	10/11/0.086
LED-CE9018-18W	18W		180x2835SMD	1400±10%	255x255x95						



- : CW (5000-7000K)
- : NW (3500-5000K)
- : WW (2700-3500K)



Emergency

Emergency response time:3H
Emergency power:2W/4W

Microwave Sensor



LED-CE9005-12W



LED-CE9006-18W/30W

Part No.	Power (W)	Voltage	LED Qty	Luminous Flux (Lm)	Size (MM)	Beam Angle	CRI	IP Grade	Average Life (hr)	Material	Packing (pcs/kg/cbm)
LED-CE9005-12W	12W	AC100-265V	120x2835SMD	1000±10%	D300xH130	120°	Ra>80	IP 54	40,000	PC Base+PC Cover	10/13/0.152
LED-CE9006-18W	18W		180x2835SMD	1500±10%	D315xH97			IP 65			10/15/0.111
LED-CE9006-30W	30W		288x2835SMD	2600±10%	D315xH97						



LED-CE9007-7W



LED-CE9008-5W

- : CW (5000-7000K)
- : NW (3500-5000K)
- : WW (2700-3500K)

Part No.	Power (W)	Voltage	LED Qty	Luminous Flux (Lm)	Size (MM)	Beam Angle	CRI	IP Grade	Average Life (hr)	Material	Packing (pcs/kg/cbm)
LED-CE9007-7W	7W	AC100-265V	34x2835SMD	600±10%	D230xH90	120°	Ra>80	IP 20	40,000	PP Base+PS Cover	12/7/0.060
LED-CE9008-5W	5W		24x2835SMD	400±10%	200x105x105						12/5/0.036



Led-lights.ie

Email: L.E.D.lighttechltd@gmail.com

Phone: 00 353 (0)45 529020